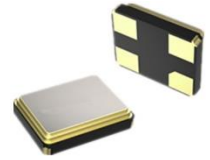


### MAIN FEATURE

- SMD Package, Seam Sealed Ceramic-Metal, 4 pads
- Low Cost, High precision & High frequency stability

### APPLICATION

- TV, STB LCDM and Cable Modem • Health care equipment and more

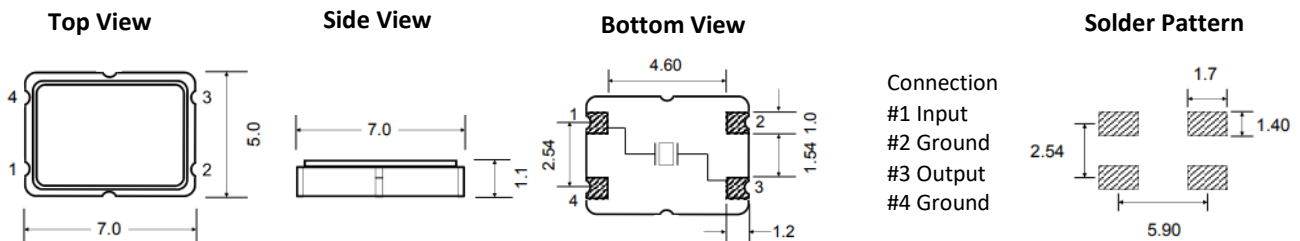


L7.0\*W5.0\*H1.1mm

### STANDARD SPECIFICATION

Parameter	Value			Unit	Condition
	Min.	Type	Max.		
Frequency Range	6.000		150.00	MHz	
Oscillation Mode	AT Fund.				3 <sup>RD</sup> Overtone Option
Frequency Tolerance	-	±50		ppm@25 °C	see p/n guide for more option
Operating Temp. Range	-40	-	+85	°C	see p/n guide for more option
Storage Temp. Range	-55	-	+125	°C	
Load Capacitance (CL)	-	18	-	pF	see p/n guide for more option
Frequency Stability	-	±50	-	ppm	see p/n guide for more option
Equivalent Series Resistance (ESR)			100	ohm	@6.000 ~ 8.000MHz
			80		@8.001~12.000MHz
			60		@12.001~16.000MHz
			50		@16.001~20.000MHz
			40		@20.001~40.000MHz
			80		@40.001~150.00MHz, 3 <sup>rd</sup> OT
Drive Level	-	-	100	µW	
Shunt Capacitance	-	-	7.0	pF	
Insulation Resistance	500	-		mW	DC/100V +-10%
Aging per year	-	±5		ppm	@25 °C

### DIMENSION (mm)



Connection  
 #1 Input  
 #2 Ground  
 #3 Output  
 #4 Ground

### PART NUMBER GUIDE

Example: TGS CM75 24M0A50-18-50-40-40 TLF

### Part Number and Part Code Structure

TGS	CM75	24M0	A	50	-18	-50	-40	-40	T	LF	XX
1	2	3	4	5	6	7	8	9	10	11	12

- 1) TGS: Company Code
- 2) CM75: SMD Crystal, 4 pads, L7.0\*W5.0\*H1.1mm
- 3) 24M0: Frequency Range 24.000MHz or please specify detail frequency range
- 4) A: Oscillation Mode, A: AT Fund. 3: 3<sup>rd</sup> Overtone
- 5) 50: Freq. tolerance, 50: +/-50ppm; 10: +/-10ppm; 20: +/-20ppm; 30: +/-30ppm or Specify detail value
- 6) 18: Load Capacitance(CL), 15: 15pF; 18: 18pF; 20: 20pF; 30: 30pF or Specify detail CL value
- 7) 50: Frequency Stability, 50: +/-50ppm;10: +/-10ppm; 20: +/-20ppm; 30: +/-30ppm or Specify detail value
- 8) 40: Operating Temp. Range, 40: -40°C ~+85°C; 10: -10°C ~+60°C; 20: -20°C ~+70°C; or Specify detail value
- 9) 40: Equivalent Series Resistance (ESR), 40: 40 ohm Max.
- 10) T: Package in Tape/Reel, 1000pcs/Reel
- 11) LF: RoHS Compliant
- 12) XX: Internal Control Code- 2 letter or digits ; Blank: N/A

TGS Crystals Ltd. reserves the right to make changes to the product(s) and or information contained herein without notice. No liability is assumed as a result of their use or application. No rights under any patent accompany the sale of any such product(s) or information.