

FEATURES

- The SF868.3-M3 is a low-loss, compact, and economical surface-acoustic-wave (SAW) filter de-signed to provide front-end selectivity in 868.30MHz receivers.

APPLICATIONS

- Communication

SPECIFICATION \*

Parameters		Product	Option Code
		SF	SF
Centre Frequency(fc) :		▲	868.300
Temp.	Operating Case Temp.:	▲	
	+85°CMax.	▲	
	Turnover Temperature:	▲	
	55°CMax.	▲	
Turnover Frequency:		▲	
fc 868.3 MHz		▲	
Frequency Temp. Coefficient:		▲	
0.032ppm/°C <sup>2</sup>		▲	
Insertion Loss(IL):		▲	
5.5 dB Max.		▲	
3 dB Pass band:		▲	
1.2MHz		▲	
3 dB Reject band:		▲	
1.5MHz Max.		▲	
Operating Temp. Range:		▲	
-10°C~+60°C		▲	
Storage Temp. Range:		▲	
-40°C~+85°C		▲	
Frequency Aging Absolute Value During the First Year(fA):		▲	
≤10ppm/year		▲	
Rejection	at fc-21.4MHz (Image):	▲	
	40 dB	▲	
	at fc-10.7MHz (LO):	▲	
30 dB		▲	
Ultimate:		▲	
60 dB		▲	
Input Power Level:		▲	
10dBm		▲	
DC Voltage:		▲	
12V DC		▲	
Case Temperature:		▲	
-40°C~+85°C		▲	
Soldering Temperature:		▲	
+235°C		▲	
Holder Type:		△	M3
5.0X5.0X1.35mm		△	
Package:		△	T
Tape/Reel		△	

▲ Standard \* Specifications Subject to Change Without Notice  
 △ Optional: please specify required code when inquiring or ordering

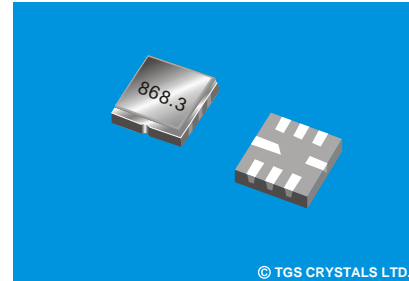
NOTE

1. Electrostatic Sensitive Device. Observe. Precautions for handling
2. Unless noted otherwise. All measurements are made with the filter installed in the specified test fixture which is connected to a 50 ohms test system with  $VSWR \leq 1.2:1$ . The test fixture L and C are adjusted for minimum insertion loss at the filter centre frequency, fc. Note that insertion loss and bandwidth and passband on the impedance matching component values and quality.
3. The frequency fc is defined as the midpoint between the 3dB frequency.
4. Where noted specifications apply over the entire specified operating temp. Range.
5. The turnover temperature, To, is the temperature of maximum (or turnover)/freq. Fo. The nominal freq. At any case temp. Tc, may be calculated from:  $f = [1-FTC (To-Tc)^2]$ .
6. Freq. Aging is the change in fc with time and is specified at +65°C or less. Aging May exceed the specification for prolonged temp. Above+65°C. Typically, aging is greatest the first year afire manufacture, decreasing significantly in subsequent years.
7. The design, manufacturing process, and specifications of this device are subject to change without notice.
8. All equipment designs utilizing this product must be approved by the appropriate prior to manufacture or sale.

PART NUMBER GUIDE

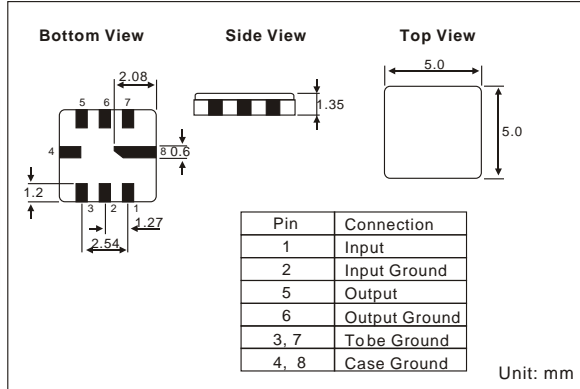
TGS	SF	868.3	M3	T
Mark	SAW Filters	Centre Freq.	Holder Type	Package

e.g. TGS SF 868.3 M3 T

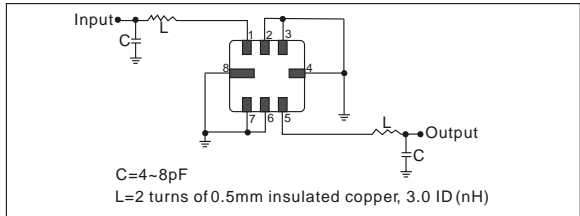


© TGS CRYSTALS LTD.

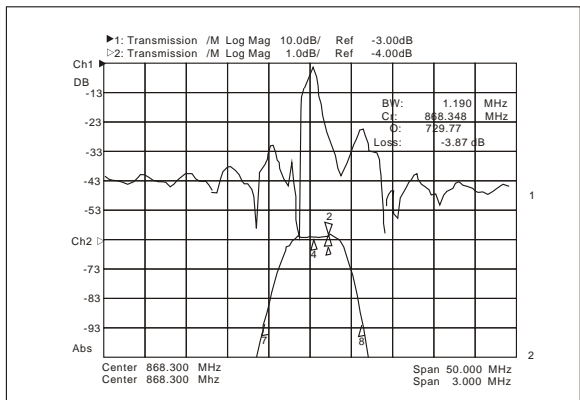
DIMENSIONS



TEST CIRCUIT



TYPICAL FREQUENCY RESPONSE



PACKAGE

- Standard package in T/R: 3000pcs/Reel, 2Reel/box, 5box/Carton  
 See page 182 for detail dimensions

