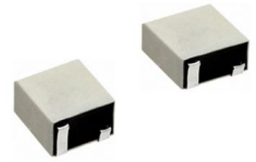


MAIN FEATURE

- SMD Package, 3 Pads, 455KHz & 450KHz
- Compatible to Murata CFUK Series • Low Cost and short lead time

APPLICATION

- Communication and more



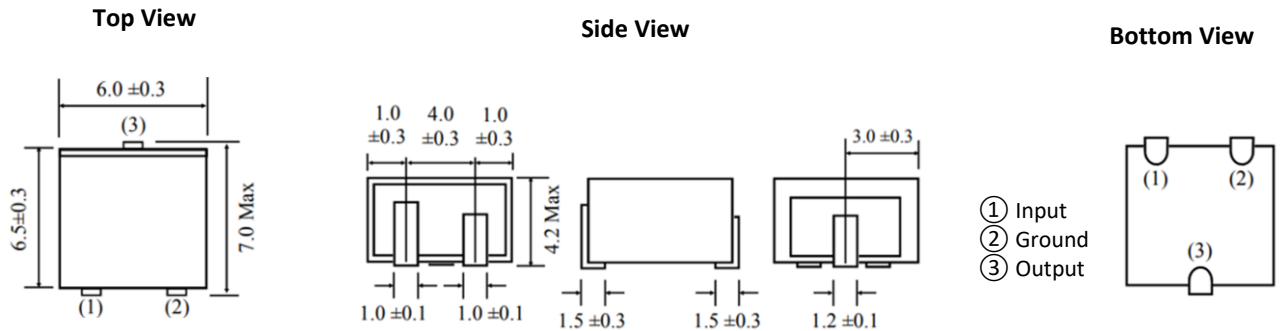
L6.5*W6.0*H4.2mm

STANDARD SPECIFICATION- 455KHz

Table 1

Short Part Number	Insertion Loss	6dB Band width	40dB Band width	GDT Deviation	Ripple	Spurious	Input/ Output	Temp. Stability	Insulation Resistance	Operating Temp. Range	Storage Temp.	
	dB Max.	KHz Max.	KHz Max.	µs Max.	dB Max.	dB	K ohm	%	M ohm Min.	°C	°C	
CFTC455AU	2.0	20.0	40.0	N/A	1.0	20	1000	±0.5	100 @DC 10V 1 minute +/-5 sec.	-20~+85	-40~+85	
CFTC455BU	2.0	15.0	30.0									
CFTC455CU	2.0	12.5	24.0									
CFTC455DU	2.0	10.0	20.0		2.0							
CFTC455EU	6.0	7.5	15.0		50		1.0					1500
CFTC 455FU	2.0	6.0	12.5									
CFTC455GU	2.0	4.5	10.0									
CFTC455HU	2.0	3.0	9.0									
CFTC455IU	4.0	2.0	7.5									
CFTC455JUT	6.0	1.5	7.5									
CFTC455KU	8.0	1.0	6.0				1000					
CFTC455LU	2.0	24.0	48.0									
CFTC455KAU	2.0	20.0	48.0									
CFTC455KBU	2.0	15.0	40.0									
CFTC455KCU	2.0	12.5	30.0									
CFTC455KDU	2.0	10.0	24.0									
CFTC455KEU	2.0	7.5	20.0	1500								
CFTC455KFU	2.0	6.0	15.0									
CFTC455KGU	2.0	4.5	12.5									
CFTC455KHU	2.0	3.0	10.0									
CFTC455KIU	4.0	2.0	9.0									
CFTC455KJU	6.0	1.5	7.5									
CFTC455KKU	8.0	1.0	6.0	1000								
CFTC455KLU	2.0	24.0	60.0									
CFTC455KAU	2.0	20.0	48.0		15							
CFTC455KBU	2.0	15.0	40.0									
CFTC455KCU	2.0	12.5	30.0									
CFTC455KDU	2.0	10.0	24.0		20							
CFTC455KEU	2.0	7.5	20.0	25								
CFTC455KFU	2.0	6.0	15.0									
CFTC455KGU	2.0	4.5	12.5									
CFTC455KHU	2.0	3.0	10.0									
CFTC455KIU	4.0	2.0	10.0									
CFTC455KJU	6.0	1.5	9.0									
CFTC455KKU	8.0	1.0	7.5									
CFTC455KLU	2.0	24.0	60.0		15							
CFTC455KLU	2.0	24.0	60.0	15	1000							

DIMENSION (mm)



PART NUMBER GUIDE

Example: TGS CFTC 455KDU TLF

Part Number and Part Code Structure

TGS	CFTC	455	K	D	U	T	LF	XX
1	2	3	4	5	6	7	8	9

- 1) TGS: Company Code
- 2) CFTC: KHz SMD Ceramic Filter,
- 3) 455: Frequency range 455KHz; 450: 450.000KHz
- 4) K: K: GTD Deviation version; Blank: N/A
- 5) D: D: +/-10.0KHz Max. @6 dB; Please see Table 1 for A~L's different value
- 6) U: 3 pads, L6.5*W6.0*H4.2mm
- 7) T: Package in Tape/Reel, 1000pcs/Reel
- 8) LF: RoHS compliant
- 9) XX: Blank: N/A; XX: Internal Control Code- 2 letter or digits